

## Anti-CDH17 hlgG1 Antibody(BI-905711)

### 产品信息

GM-52672AB-10	10 µg
GM-52672AB-100	100 µg
GM-52672AB-1000	1 mg

### 抗体信息

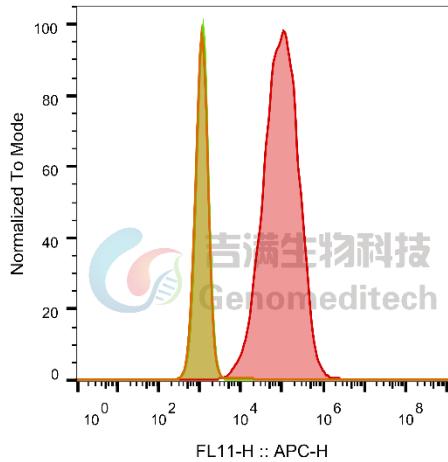
Species Reactivity	Human; Rhesus; Cynomolgus
Clone	BI-905711
Source/Isotype	Monoclonal Human IgG1, κ
Application	Flow Cytometry
Specificity	Detects CDH17.
Gene	CDH17
Other Names	CDH16, HPT-1, HPT1
Gene ID	1015 (Human), 698886 (Rhesus), 102129651 (Cynomolgus)
Background	This gene is a member of the cadherin superfamily, genes encoding calcium-dependent, membrane-associated glycoproteins. The encoded protein is cadherin-like, consisting of an extracellular region, containing 7 cadherin domains, and a transmembrane region but lacking the conserved cytoplasmic domain. The protein is a component of the gastrointestinal tract and pancreatic ducts.
Storage	Store at 2-8°C short term (1-2 weeks).Store at ≤ -20°C long term. Avoid repeated freeze-thaw.
Formulation	Phosphate-buffered solution, pH 7.2.
Endotoxin	< 1 EU/mg, determined by LAL gel clotting assay

Version:3.1 Revision Date:12/25/2023

## Data Examples

### Flow cytometry

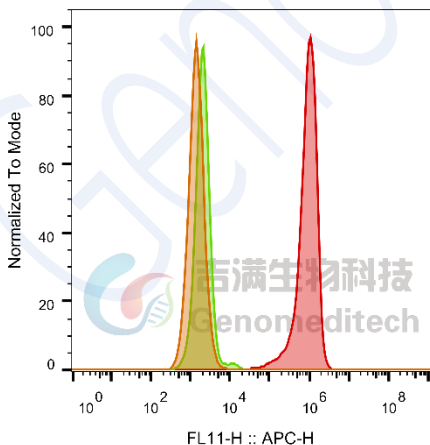
The recommended usage range is 0.5-4 µg per test. H\_CDH17 CHO-K1 Cell Line (Catalog # GM-C25980) was stained with Anti-CDH17 hIgG1 Antibody (Catalog # GM-52672AB) or isotype control antibody, followed by anti-Human IgG APC-conjugated Secondary Antibody.



SampleID	Geometric Mean : FL11-H
CHO-K1 anti-CDH17+APC-2nd Ab	1149
CHO-K1 H_CDH17 H_IgG+APC-2nd Ab	1169
CHO-K1 H_CDH17 anti-CDH17+APC-2nd Ab	92308

### Flow cytometry

The recommended usage range is 0.5-4 µg per test. Rhesus\_CDH17 HEK-293 Cell Line (Catalog # GM-C28746) was stained with Anti-CDH17 hIgG1 Antibody (Catalog # GM-52672AB) or isotype control antibody, followed by anti-Human IgG APC-conjugated Secondary Antibody.

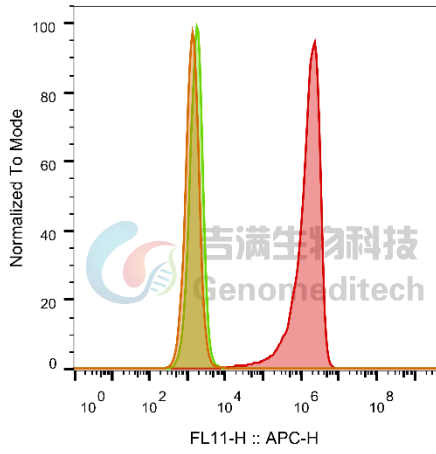


SampleID	Geometric Mean : FL11-H
HEK-293 Anti-CDH17+APC-2nd Ab	1435
HEK-293 Rhesus_CDH17 H_IgG +APC-2nd Ab	2105
HEK-293 Rhesus_CDH17 Anti-CDH17+APC-2nd Ab	8.61E5

### Flow cytometry

The recommended usage range is 0.5-4 µg per test. Cynomolgus\_CDH17 HEK-293 Cell Line (Catalog # GM-C25982) was stained with Anti-CDH17 hIgG1 Antibody (Catalog # GM-52672AB) or isotype control antibody, followed by anti-Human IgG APC-conjugated Secondary Antibody.

Version:3.1 Revision Date:12/25/2023



SampleID	Geometric Mean : FL11-H
HEK-293 Anti-CDH17+APC-2nd Ab	1395
HEK-293 Cyno_CDH17 H_IgG+APC-2nd Ab	1750
HEK-293 Cyno_CDH17 Anti-CDH17+APC-2nd Ab	1.38E6

Fig. FACS

Genomeditech